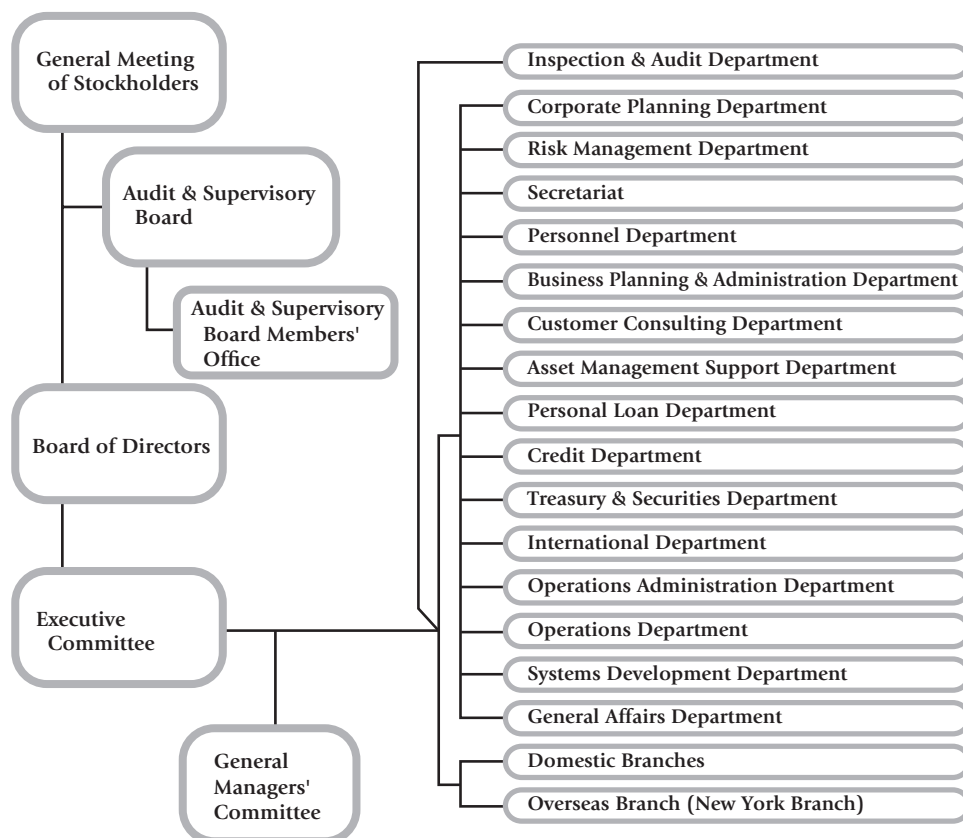


## Major Shareholders

(As of 31st March, 2019)

	Number of shares held (in thousands)	%
Japan Trustee Services Bank, Ltd. (Trust Account)	19,291	4.51
The Master Trust Bank of Japan, Ltd. (Trust Account)	17,344	4.06
Japan Trustee Services Bank, Ltd. (Trust Account 9)	16,051	3.76
Sumitomo Mitsui Banking Corporation	12,148	2.84
The Gunma Bank Employees' Stockholdings Association	11,983	2.80
Meiji Yasuda Life Insurance Company	11,056	2.59
Sumitomo Life Insurance Company	10,657	2.49
Japan Trustee Services Bank, Ltd. (Trust Account 4)	7,754	1.81
Japan Trustee Services Bank, Ltd. (Trust Account 5)	7,723	1.80
Nippon Life Insurance Company	7,608	1.78
Total	121,618	28.49

## Organization Chart



(As of 30th June, 2019)