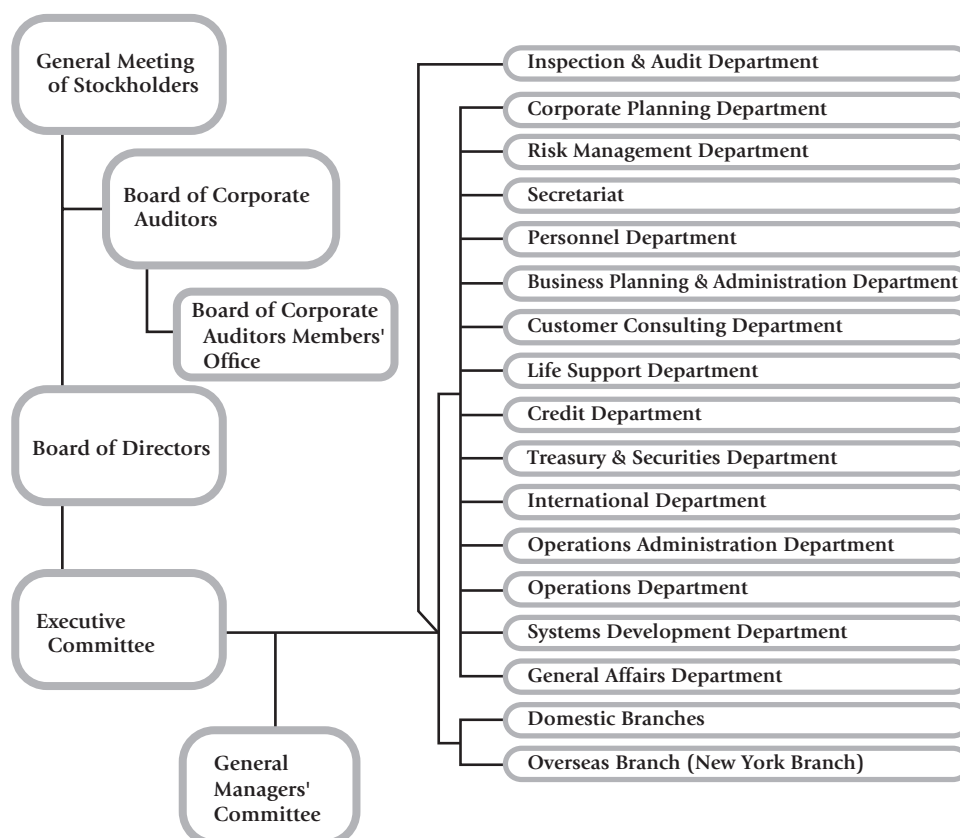


## Major Shareholders

(As of 31st March, 2020)

	Number of shares held (in thousands)	%
The Master Trust Bank of Japan, Ltd. (Trust Account)	22,404	5.34
Japan Trustee Services Bank, Ltd. (Trust Account)	19,998	4.76
The Gunma Bank Employees' Stockholdings Association	12,633	3.01
Japan Trustee Services Bank, Ltd. (Trust Account 9)	11,815	2.81
Meiji Yasuda Life Insurance Company	11,056	2.63
Sumitomo Life Insurance Company	10,657	2.54
Japan Trustee Services Bank, Ltd. (Trust Account 5)	7,887	1.88
Japan Trustee Services Bank, Ltd. (Trust Account 4)	7,747	1.84
Nippon Life Insurance Company	7,608	1.81
JP MARGAN CHASE BANK 385151	7,380	1.75
Total	119,188	28.41

## Organization Chart



(As of 24th June, 2020)