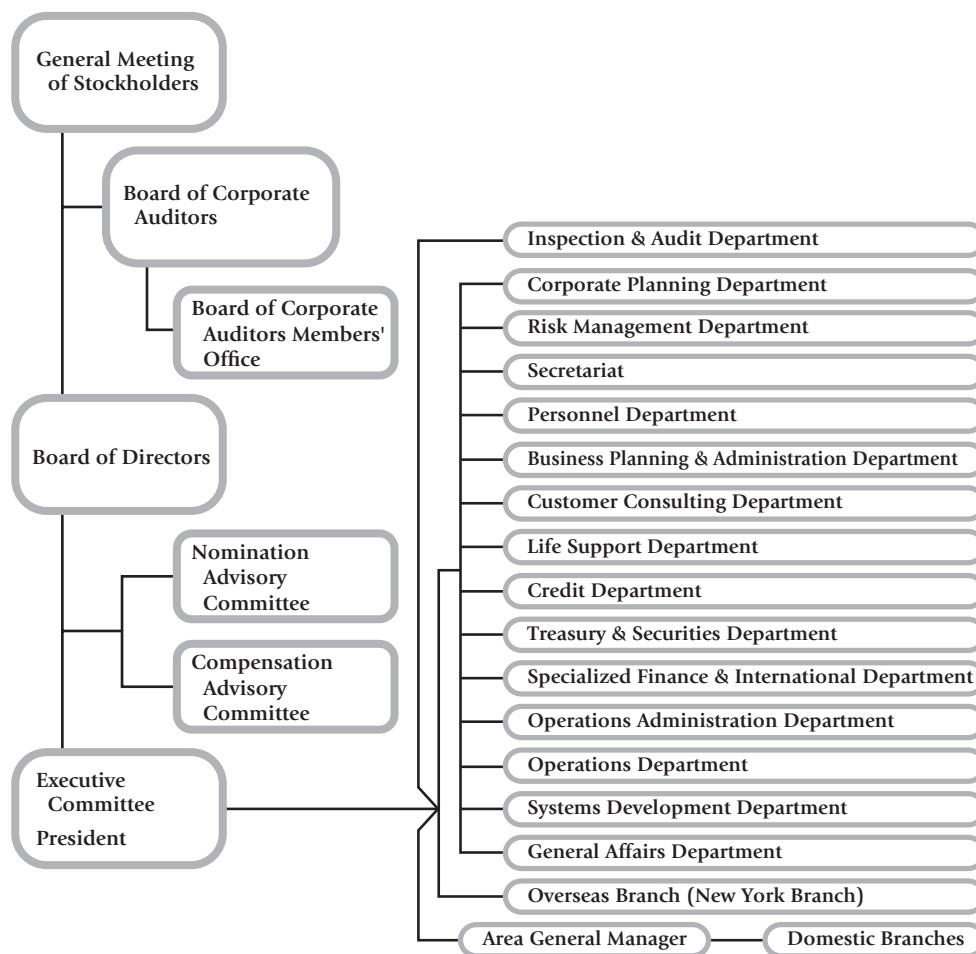


Major Shareholders

(As of 31st March, 2022)

	Number of shares held (in thousands)	%
The Master Trust bank of Japan, Ltd. (Account in trust)	59,552	14.50
Custody Bank of Japan, Ltd. (Account in trust)	16,844	4.10
Gunma Bank Employees' Shareholding Association	13,371	3.25
Meiji Yasuda Life Insurance Company	11,056	2.69
Sumitomo Life Insurance Company	10,657	2.59
Toyo Seikan Group Holdings, Ltd.	7,330	1.78
Nippon Life Insurance Company	6,467	1.57
Sumitomo Mitsui Banking Corporation	5,948	1.44
Custody Bank of Japan, Ltd. (Account in trust 4)	5,391	1.31
STATE STREET BANK WEST CLIENT-TREATY 505234	5,035	1.22
Total	141,654	34.49

Organization Chart



(As of 30th June, 2022)