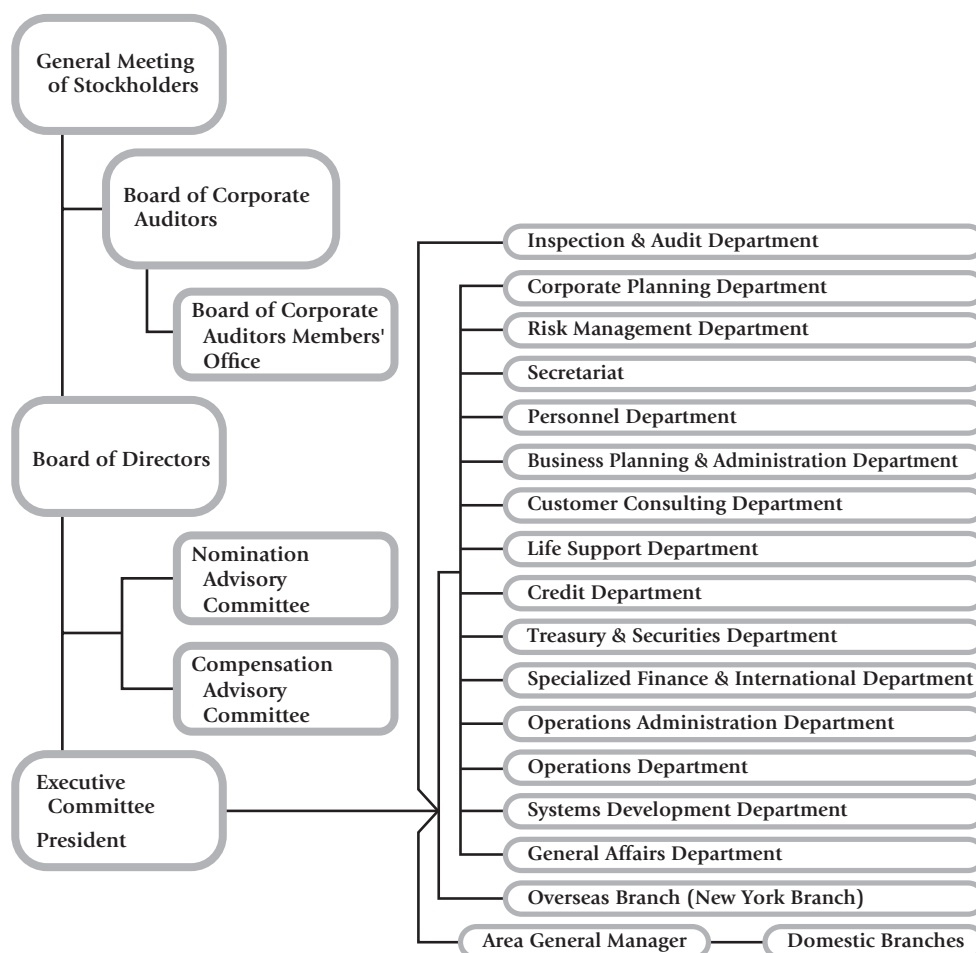


## Major Shareholders

(As of 31st March, 2023)

	Number of shares held (in thousands)	%
The Master Trust bank of Japan, Ltd. (Account in trust)	57,338	14.10
Custody Bank of Japan, Ltd. (Account in trust)	20,074	4.93
Gunma Bank Employees' Shareholding Association	13,019	3.20
Sumitomo Life Insurance Company	10,657	2.62
Meiji Yasuda Life Insurance Company	10,504	2.58
Toyo Seikan Group Holdings, Ltd.	7,330	1.80
Nippon Life Insurance Company	6,467	1.59
DFA INTL SMALL CAP VALUE PORTFOLIO	5,541	1.36
JP MORGAN CHASE BANK 385781	5,397	1.32
Custody Bank of Japan, Ltd. (Account in trust 4)	5,319	1.30
Total	141,649	34.84

## Organization Chart



(As of 30th June, 2023)