

Major Shareholders

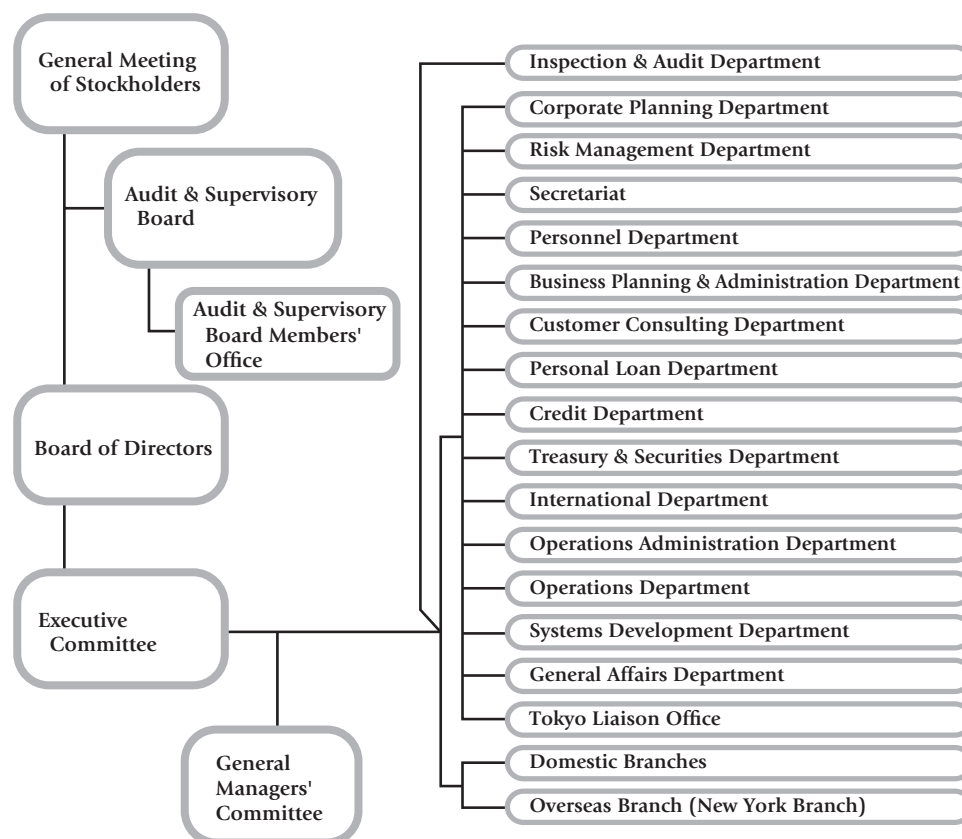
(As of 31st March, 2017)

	Number of shares held (in thousands)	%
Japan Trustee Services Bank, Ltd. (Trust Account)	17,623	3.74
The Gunma Bank Employees' Stockholdings Association	12,342	2.62
Sumitomo Mitsui Banking Corporation	12,148	2.57
The Master Trust Bank of Japan, Ltd. (Trust Account)	11,880	2.52
Japan Trustee Services Bank, Ltd. (Trust Account 9)	11,074	2.35
Meiji Yasuda Life Insurance Company	11,056	2.34
Sumitomo Life Insurance Company	10,657	2.26
Japan Trustee Services Bank, Ltd. (Trust Account 5)	8,054	1.71
Tokio Marine & Nichido Fire Insurance Co., Ltd.	7,977	1.69
The Bank of Tokyo-Mitsubishi UFJ, Ltd.	7,803	1.65
Total	110,617	23.49

Note:

Other than the shares stated above, 30,959 thousand shares of treasury stock are held by the Bank in the name of The Gunma Bank, Ltd. (ratio of number of shares held against total number of shares issued and outstanding is 6.57%).

Organization Chart



(As of 30th June, 2017)