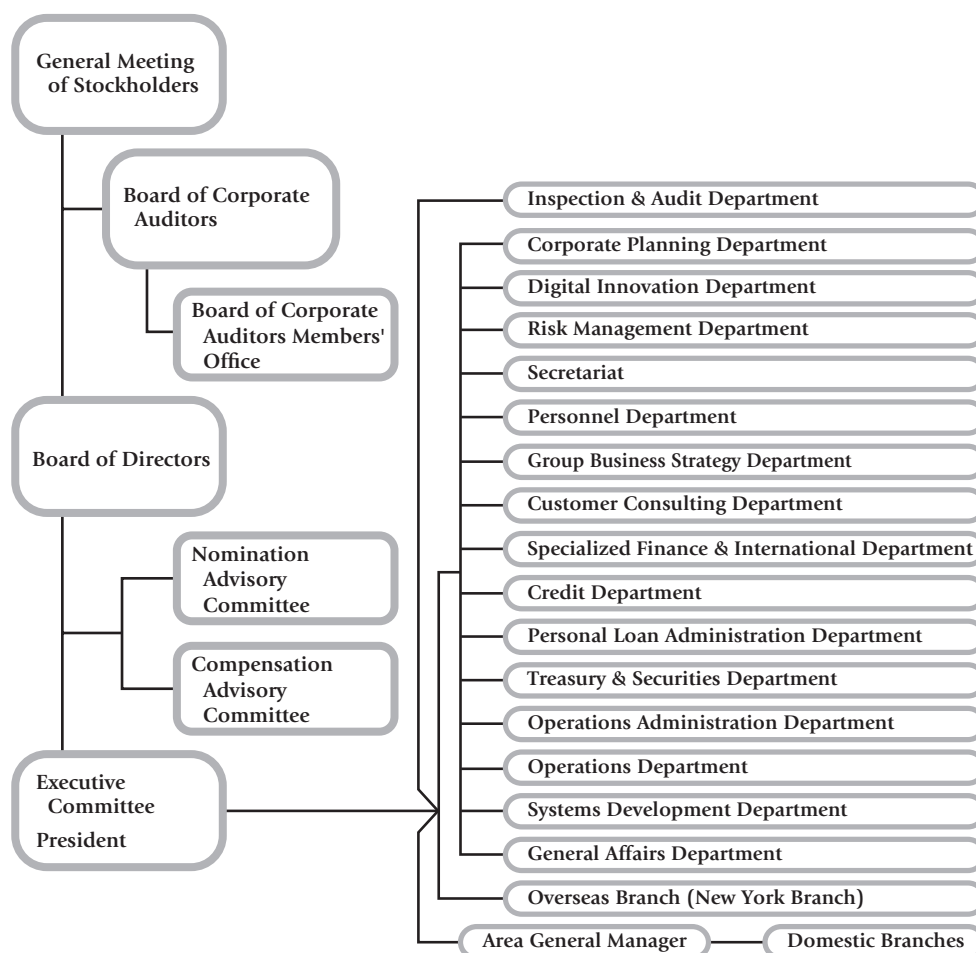


Major Shareholders

(As of 31st March, 2024)

	Number of shares held (in thousands)	%
The Master Trust bank of Japan, Ltd. (Account in trust)	54,056	13.77
Custody Bank of Japan, Ltd. (Account in trust)	26,047	6.63
Gunma Bank Employees' Shareholding Association	11,396	2.90
Sumitomo Life Insurance Company	10,657	2.71
Meiji Yasuda Life Insurance Company	9,398	2.39
Toyo Seikan Group Holdings, Ltd.	7,330	1.86
Nippon Life Insurance Company	6,467	1.64
DFA INTL SMALL CAP VALUE PORTFOLIO	5,461	1.39
State Street Bank and Trust Company 505103	5,174	1.31
State Street Bank and Trust Company 505223	5,174	1.31
Total	141,164	35.96

Organization Chart



(As of 30th June, 2024)