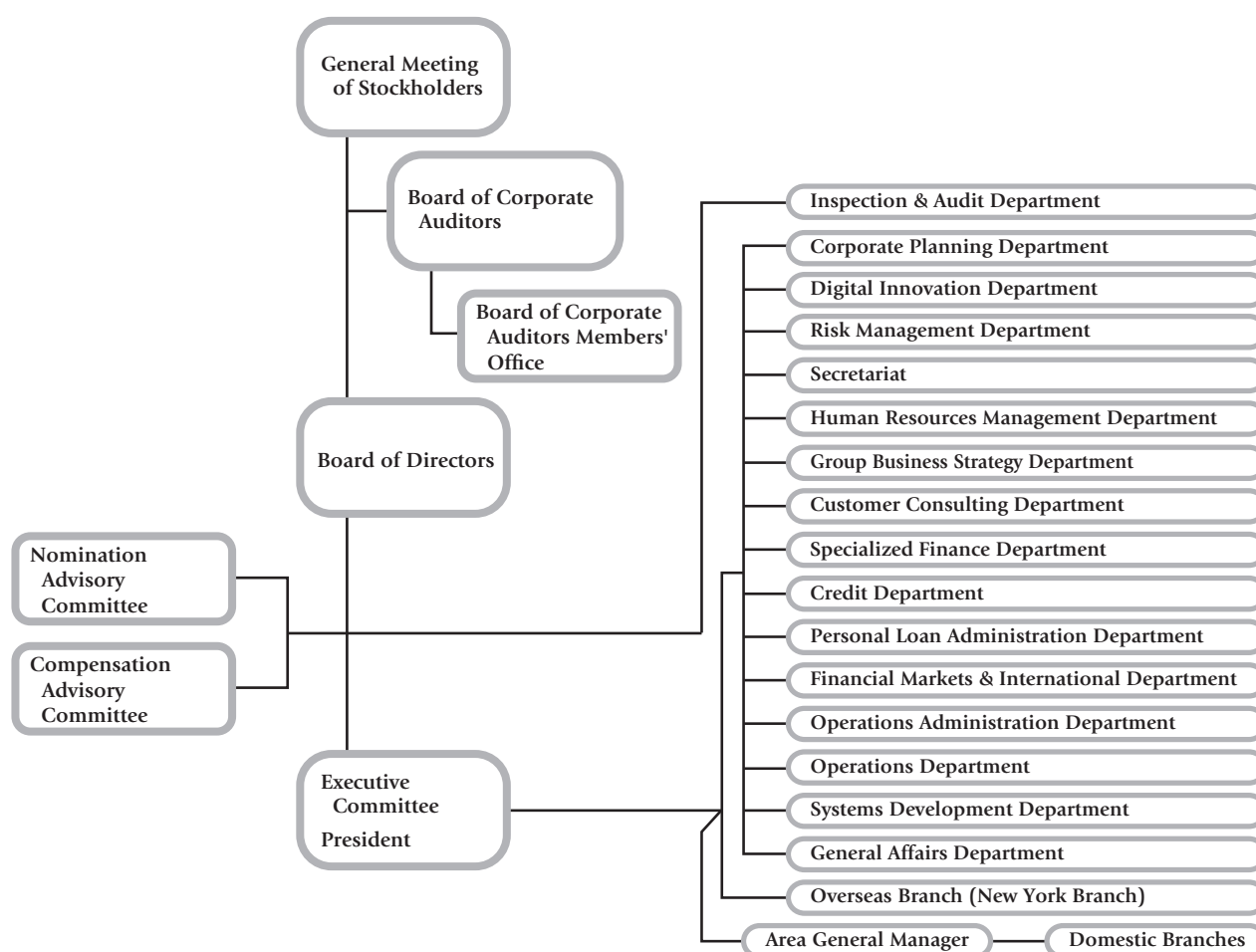


Major Shareholders

(As of 31st March, 2025)

	Number of shares held (in thousands)	%
The Master Trust bank of Japan, Ltd. (Account in trust)	53,461	13.98
Custody Bank of Japan, Ltd. (Account in trust)	25,061	6.55
Sumitomo Life Insurance Company	10,657	2.78
Meiji Yasuda Life Insurance Company	10,015	2.61
Gunma Bank Employees' Shareholding Association	9,872	2.58
STATE STREET BANK AND TRUST COMPANY 505001	8,746	2.28
Toyo Seikan Group Holdings, Ltd.	7,330	1.91
Nippon Life Insurance Company	6,467	1.69
DFA INTL SMALL CAP VALUE PORTFOLIO	5,461	1.42
JP MORGAN CHASE BANK 385781	4,931	1.28
Total	142,004	37.13

Organization Chart



(As of 30th June, 2025)