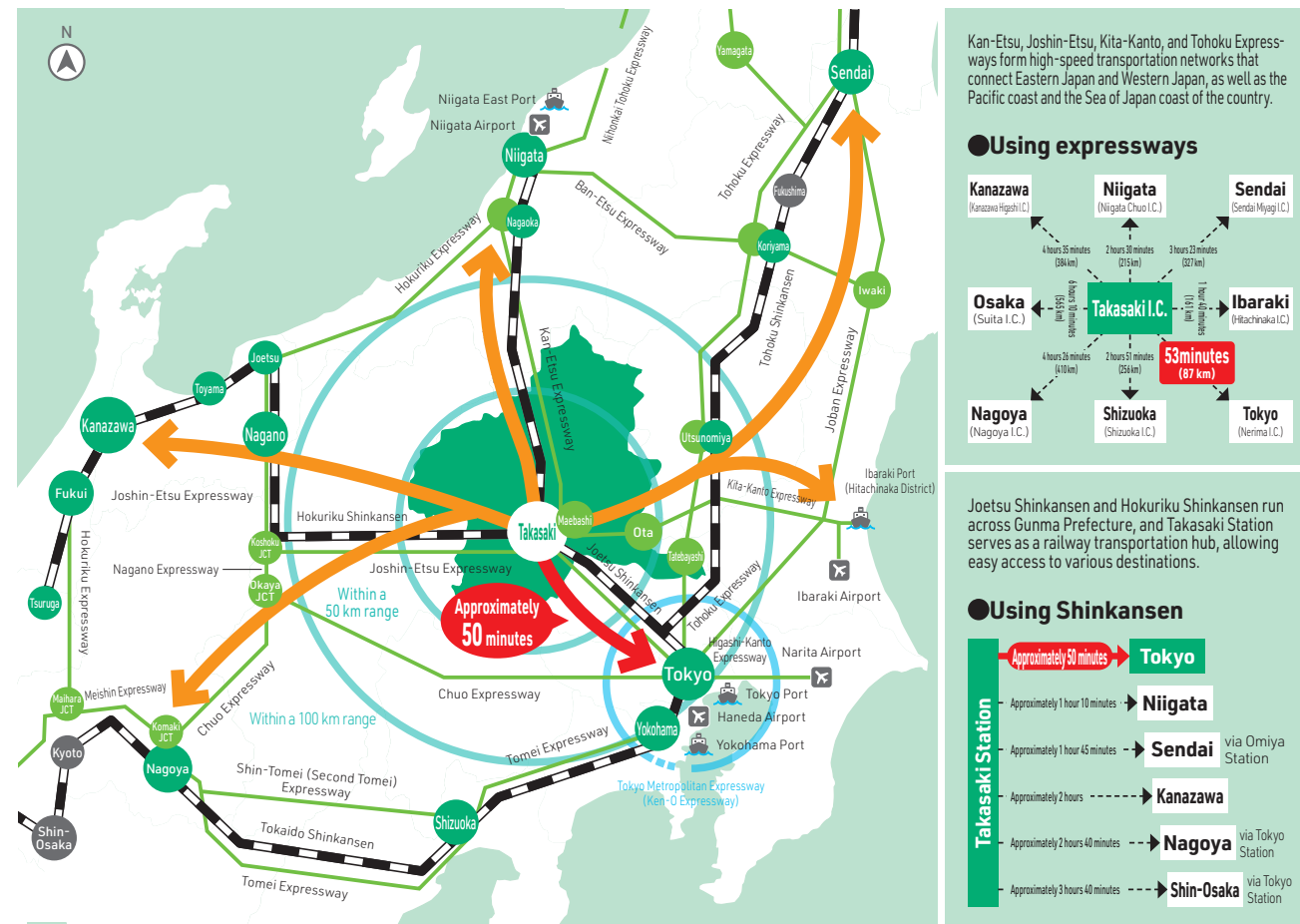


Strengths of Gunma Prefecture

Excellent access to Greater Tokyo and a rich natural environment

Gunma Prefecture as a key transportation hub

With a railway network centered on the Joetsu, Nagano, and Hokuriku Shinkansen lines, and a road network centered on the Kan-Etsu Expressway, Gunma provides good access not only to Greater Tokyo but also to Hokuriku and Koshinetsu.



Rich natural environment

Gunma has had 78 earthquakes with seismic intensity of 4 or higher over the past 106 years, the least number among the prefectures in the Kanto region of Japan, while the number of households affected by natural disasters has been at the lowest level in the country.

Besides, Gunma ranks second among all the prefectures of Japan in hours of sunlight per year, and the amount of snowfall in the wintertime is relatively small in its lowland areas. Gunma has a rich natural environment.

[Number of earthquakes with seismic intensity of 4 or higher]
(January 1, 1919 to March 31, 2025)

Ranking	Prefecture	Number of occurrences
1	Gunma Pref.	78
2	Kanagawa Pref.	122
3	Saitama Pref.	166
4	Chiba Pref.	240
5	Tochigi Pref.	248
6	Ibaraki	399
7	Tokyo	580

[Number of households affected by natural disasters, etc.]
(2014 to 2023)

Ranking	Prefecture	Number of households affected
1	Gunma Pref.	443
2	Tokyo	2,397
3	Kanagawa Pref.	3,075
4	Saitama Pref.	5,795
5	Tochigi Pref.	7,434
6	Chiba Pref.	8,654
7	Ibaraki Pref.	8,720

[Hours of sunlight (yearly)]
(FY2023)

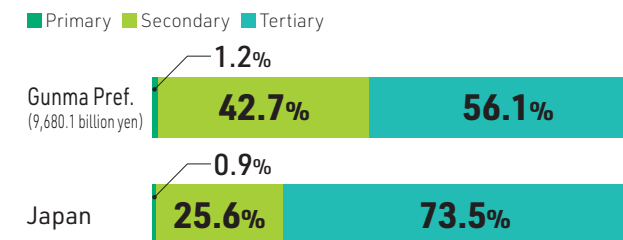
Ranking	Prefecture
1	Saitama Pref.
2	Gunma Pref.
3	Yamanashi Pref.
4	Shizuoka Pref.
5	Ibaraki Pref.

Source: IR Materials of Gunma Prefecture (June 2025)

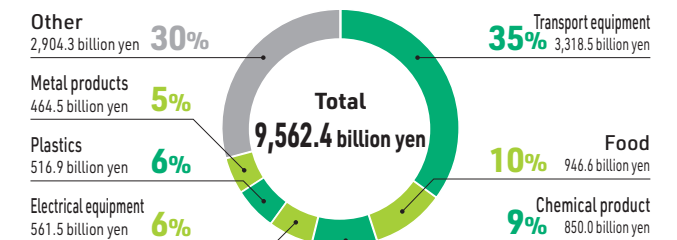
-Gunma's rich natural environment attracting investment and creating a strong economic base-

Manufacturing industry serving as an engine for Gunma Prefecture's economy

[Nominal prefectural (domestic) gross production ratio by industry] (2022)



[Manufactured product shipments, etc.] (2022)



[No. 1 product nationwide in terms of manufactured product shipment value] (2022)

Instant noodles Tofu Ballpoint pens *Source: IR Materials of Gunma Prefecture (June 2025)

Attractive tourism resources

- Gunma has 97 hot spring areas, ranking first in the Kanto region of Japan and eighth in the country.
- World Heritage Site of the Tomioka Silk Mill and related sites
 - Began operation as Japan's first government-run model silk mill factory. Became the first industrial heritage designated as a national treasure of Japan.
- Leveraging its rich water resources, Gunma ranks sixth in Japan in the maximum output of hydro-electric power.



Sources: "2023 State of Use of Hot Springs," the Ministry of the Environment, and 2024 Electric Power Survey Statistics (the number of power plants and output by prefecture, February 2025), the Ministry of Economy, Trade and Industry

Key data of Gunma Prefecture

<div>Population</div> <div>1,890,000 people</div> <div>Ranking 18th in Japan</div> <div>(October 1, 2024)</div>	<div>Agricultural output</div> <div>265.5 billion yen</div> <div>Ranking 12th in Japan</div> <div>(2023)</div>	<div>Ranking of best places for relocation</div> <div>Ranking 1st in Japan</div> <div>(2024)</div>	<div>Working-age population ratio</div> <div>58.1%</div> <div>Ranking 15th in Japan</div> <div>(October 1, 2024)</div>													
<div>Manufactured product shipments</div> <div>9,562.4 billion yen</div> <div>Ranking 13th in Japan</div> <div>(2022)</div>	<div>Number of factory locations</div> <div>41 locations</div> <div>Ranking 4th in Japan</div> <div>(2023)</div>	<div>Ranking high in the number of factory locations every year</div> <table><tr><th>2018</th><th>2019</th><th>2020</th><th>2021</th><th>2022</th><th>2023</th></tr><tr><td>2nd</td><td>4th</td><td>4th</td><td>4th</td><td>6th</td><td>4th</td></tr></table>			2018	2019	2020	2021	2022	2023	2nd	4th	4th	4th	6th	4th
2018	2019	2020	2021	2022	2023											
2nd	4th	4th	4th	6th	4th											

Source: IR Materials of Gunma Prefecture (June 2025)